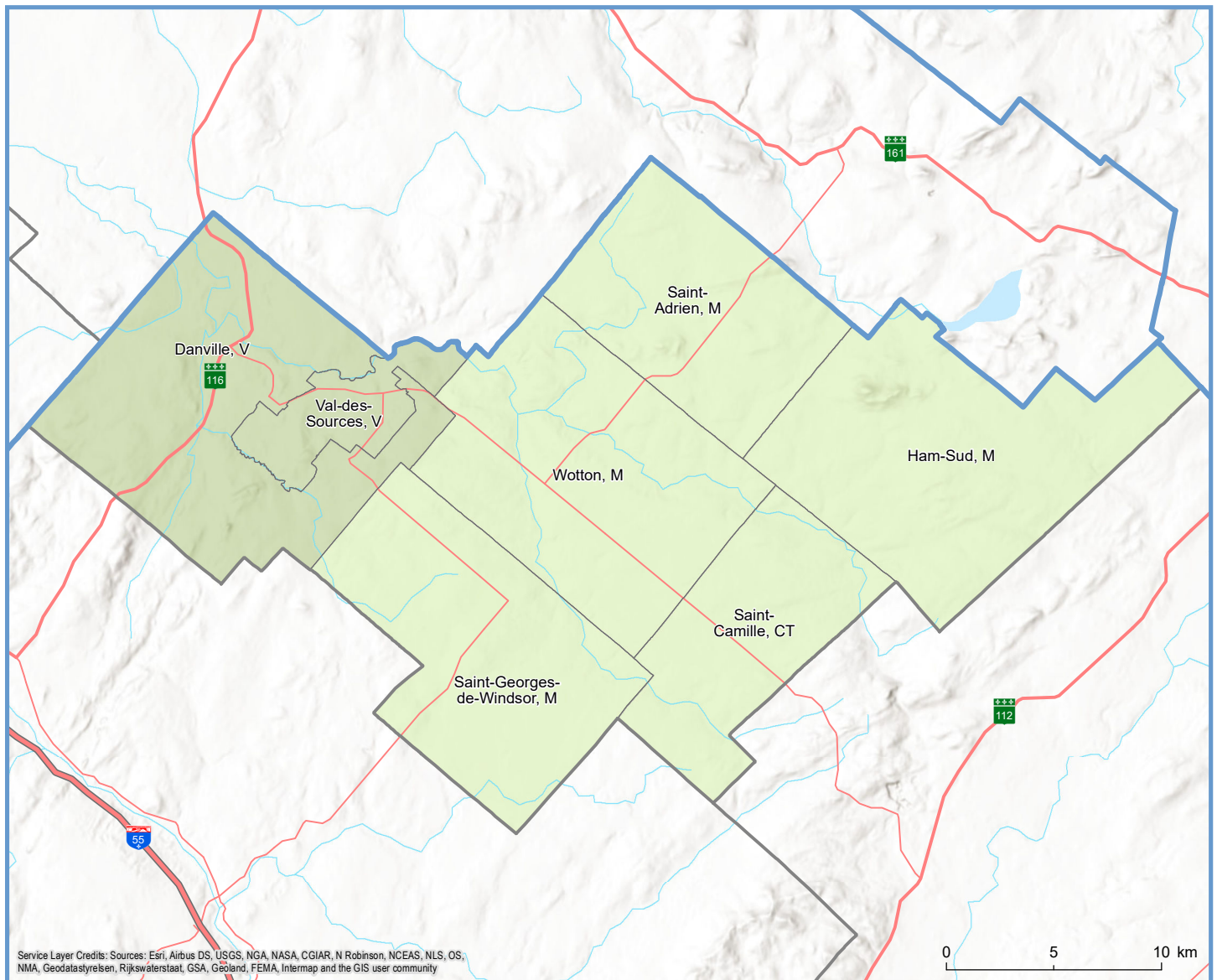


| Code | Municipalité | Désignation | Population (2022) | Superficie terrestre(km ²) |
|----------------|--------------------------|-------------|-------------------|--|
| 40005 | Ham-Sud | M | 242 | 151,75 |
| 40010 | Saint-Adrien | M | 549 | 98,40 |
| 40017 | Wotton | M | 1 406 | 143,37 |
| 40025 | Saint-Camille | CT | 548 | 83,28 |
| 40032 | Saint-Georges-de-Windsor | M | 976 | 126,91 |
| 40043 | Val-des-Sources | V | 6 994 | 30,24 |
| 40047 | Danville | V | 3 848 | 151,75 |
| Total : | | | 14 563 | 785,70 |



Service Layer Credits: Sources: Esri, Airbus DS, USGS, NGA, NASA, CGIAR, N Robinson, NCEAS, NLS, OS, NMA, Geodatasysteisen, Rijkswaterstaat, GSA, Geoland, FEMA, Intermap and the GIS user community

Population par municipalit  (2022)

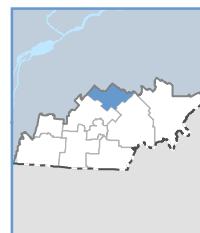
- 0 - 1 999 h.
- 2 000 h. - 9 999 h.

Limites administratives

- R gion administrative
- MRC

R seau routier

- Autoroute
- Route nationale
- Route r gionale



Direction de la transformation num rique et de la g omatique, f vrier 2022
  Gouvernement du Qu bec