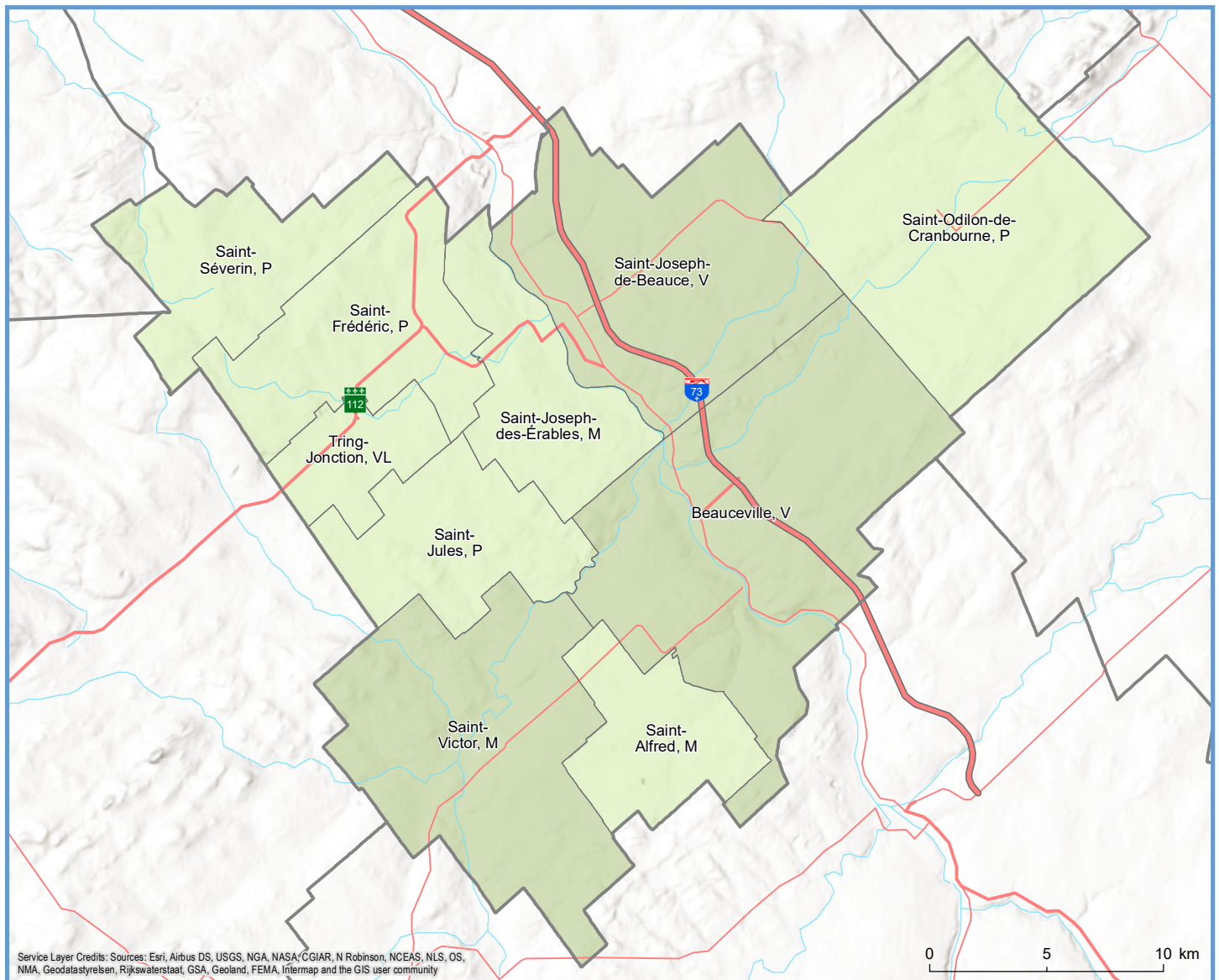
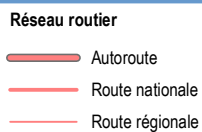
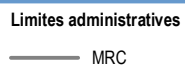
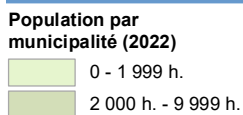


Code	Municipalité	Dési- gnation	Population (2022)	Superficie terrestre(km ²)
27008	Saint-Victor	M	2 376	119,50
27015	Saint-Alfred	M	538	43,39
27028	Beauceville	V	6 296	164,56
27035	Saint-Odilon-de-Cranbourne	P	1 378	130,25
27043	Saint-Joseph-de-Beauce	V	4 915	115,24
27050	Saint-Joseph-des-Érables	M	414	51,66
27055	Saint-Jules	P	540	55,78
27060	Tring-Jonction	VL	1 467	27,18
27065	Saint-Frédéric	P	1 058	72,17
27070	Saint-Séverin	P	299	58,64
Total :			19 281	838,36



Service Layer Credits: Sources: Esri, Airbus DS, USGS, NGA, NASA/GIAI, N Robinson, NCEAS, NLS, OS, NMA, Geodatasystemen, Rijkswaterstaat, GSA, Geoland, FEMA, Intermap and the GIS user community



Direction de la transformation numérique
et de la géomatique, février 2022
© Gouvernement du Québec