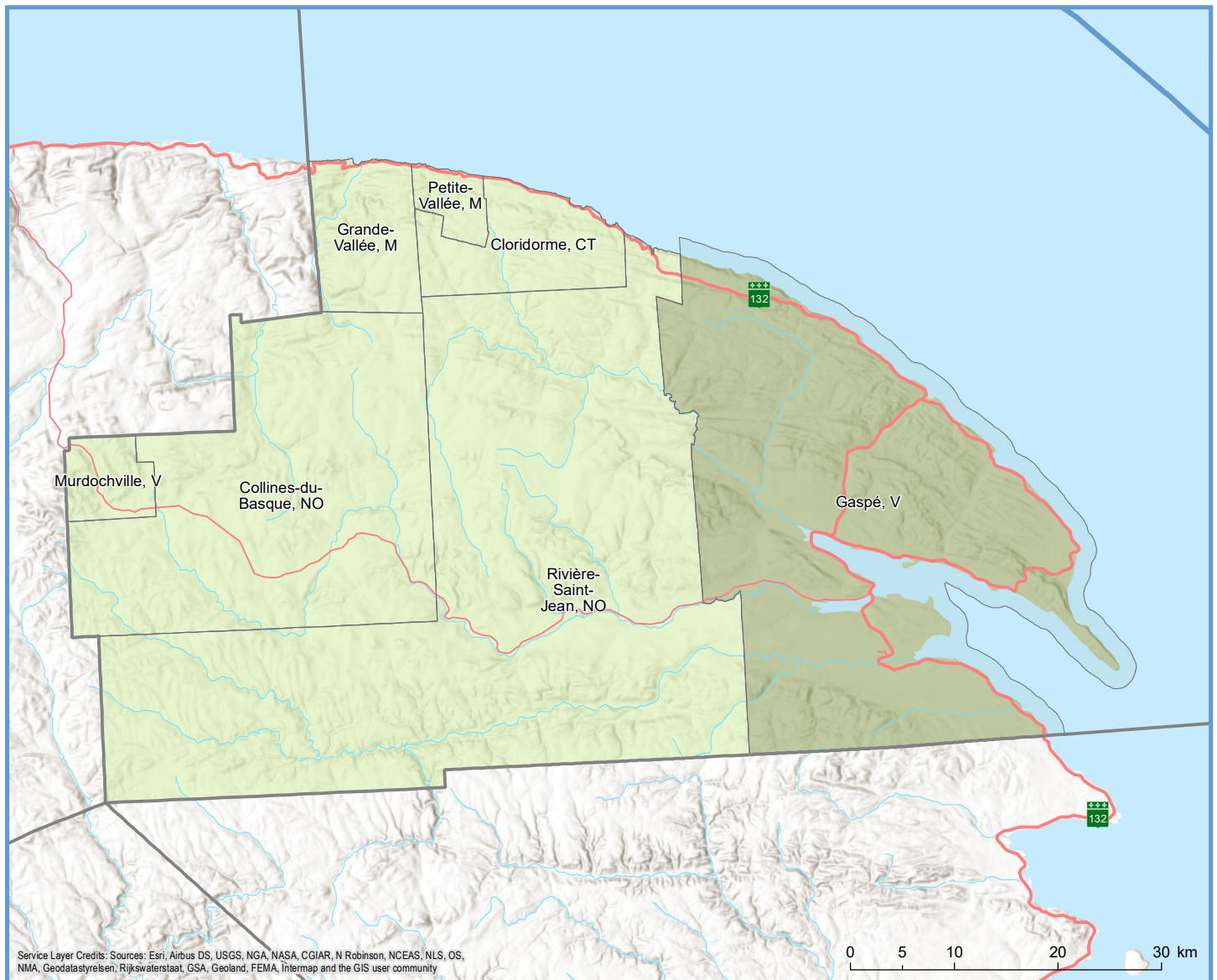


| Code           | Municipalité       | Désignation | Population (2022) | Superficie terrestre(km <sup>2</sup> ) |
|----------------|--------------------|-------------|-------------------|--|
| 03005          | Gaspé              | V           | 15 151            | 1 118,53                               |
| 03010          | Cloridorme         | CT          | 614               | 158,89                                 |
| 03015          | Petite-Vallée      | M           | 166               | 40,30                                  |
| 03020          | Grande-Vallée      | M           | 1 068             | 144,45                                 |
| 03025          | Murdochville       | V           | 621               | 62,75                                  |
| 03902          | Rivière-Saint-Jean | NO          | 0                 | 1 744,31                               |
| 03904          | Collines-du-Basque | NO          | 0                 | 819,33                                 |
| <b>Total :</b> |                    |             | <b>17 620</b>     | <b>4 088,55</b>                        |



Service Layer Credits: Sources: Esri, Airbus DS, USGS, NGA, NASA, CGIAR, N Robinson, NCEAS, NLS, OS, NMA, Geodatasysteisen, Rijkswaterstaat, GSA, Geoland, FEMA, Intermap and the GIS user community

### Population par municipalit  (2022)

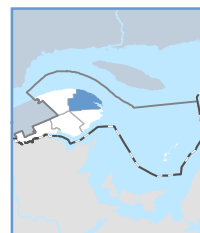
- 0 - 1 999 h.
- 10 000 h. - 49 999 h.

### Limites

- R gion administrative
- MRC

### R seau routier

- Route nationale
- Route r gionale



Direction de la transformation num rique et de la g omatique, f vrier 2022  
  Gouvernement du Qu bec